



CATALOGUE 2024



TILE ADHESIVE & SEALANTS



STRONG FIX TILE ADHESIVE (CTF) (CT1)

20KGS/BAG
1344BAGS / 20FT FCL

POWER FIX TILE ADHESIVE (CTF) (CT2)

20KGS/BAG
1344BAGS / 20FT FCL



SUPER FLEX TILE ADHESIVE (CTF) (CT2)

20KGS/BAG
1344BAGS / 20FT FCL

DUNLOP TILE ADHESIVE (CTF) (CT1)

20KGS/BAG
1344BAGS / 20FT FCL



FINE GROUT

5 KGS/BAG (4BAGS PER
AVAILABLE IN VARIOUS COLOURS
WHITE, CHARCOAL, SILVER GREY & MANY MORE

AEROSOL SPRAY PAINT

400ML/CAN
AVAILABLE IN VARIOUS COLOURS



NEUTRAL SILICON 300G

FILL THE GAP (WHITE) 480G



SUPER NAIL 320G

ROOFING & AWNING SEALANT 300ML

TILE ADHESIVE & SEALANTS



PVC SOLVENT CEMENT

100G (80CANS/BOX)
500G (20CANS/BOX)



ALL PURPOSE JOINT COMPOUND

AVAILABLE IN 5K G, 25KG & 28KG



SUPERGLUE 3ML

INNER BOX : 24 PACKS
OUTER BOX: 288 PACKS

NO MORE NAILS 75G

INNER BOX : 24 PACKS
OUTER BOX: 288 PACKS



RTV GREY 75G

RTV RED 75G

INNER BOX : 24 PACKS
OUTER BOX: 288 PACKS



EPOXY 3 T ON 2 X 17.5ML

EPOXY 4 MIN 2 X 17.5ML

INNER BOX : 24 PACKS
OUTER BOX: 288 PACKS



TOILET SETS AND SEATS



**TOILET SET P TRAP
TOILET SET S TRAP**

(3/6L DUAL FLUSH
220SETS/20FT FCL



**TOILET SEAT & COVER BLACK
TOILET SEAT & COVER WHITE**

POLYTHENE SHEETS



BLACK POLYTHENE SHEET

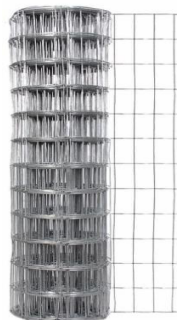
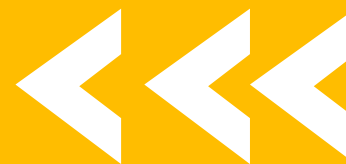
4M X 50M X 80 MICRON
4M X 50M X 125 MICRON
65 ROLLS / PALLET



**SISALATION SINGLE SIDED
SISALATION DOUBLE SIDED**

1.25 X 60M
75M2 / ROLL

MESH PRODUCTS



PIG FENCE 155X120X800X50M
(24KG/COIL)

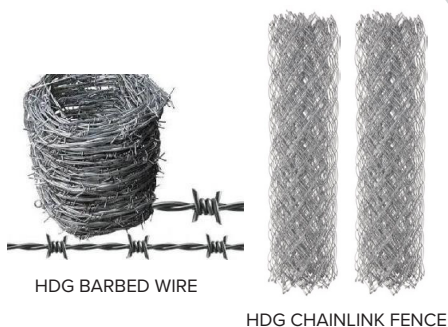
PIG FENCE 155X120X1500X50M
(38KG/COIL)



FIBREGLASS MESH BLACK
16X16X3FTX100FT (3.1KG/ROLL)
16X1 6X4FTX100FT (4.1KG/ROLL)



NYLON MESH
16X16X3FTX100FT (3KG/ROLL)
16X16X4FTX100FT (4KG/ROLL)
AVAILABLE IN GREEN, LIGHT GREY, BLUE



HDG BARBED WIRE
2.5X4"X25KG/COIL

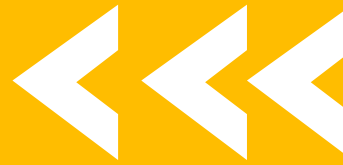
HDG CHAINLINK FENCE
2"X2"X4FTX15M (29.6KGS/COIL)
2"X2"X5FTX15M (36.6KGS/COIL)
2"X2"X6FTX15M (43.4KGS/COIL)
2"X2"X8FTX15M (57.9KGS/COIL)
ABOVE SIZES ALSO AVAILABLE IN PVC COATING



UNGALVANISED TIE WIRE 1.6MM
AVAILABLE IN 1KG, 5KG & 25KG

GALVANISED TIE WIRE 1.6MM
AVAILABLE IN 1KG, 5KG & 25KG

NAIL PRODUCTS



GALVANISED FLAT HEAD NAILS

25KGS/CARTON

AVAILABLE IN HDG & EG
20MM, 40MM, 50MM, 65MM, 75MM, 90MM, 100MM,
125MM



CONCRETE NAILS

5KGS/CARTONS
50MM, 75MM, 90MM, 100MM



TWISTED SHANK ROOFING NAIL

WITH WASHER / WITHOUT WASHER
75MM X 3.75MM X 25KG AVAILABLE IN GREEN,
LIGHT GREY, BLUE

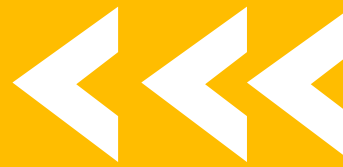


GALVANISED CLOUT HEAD NAILS

25KGS/CARTON

AVAILABLE IN HDG & EG
20MM, 25MM, 32MM, 40MM, 50MM

BOARD PRODUCTS



EXTERIOR PLYWOOD

1220X2440MM

AVAILABLE IN SIZES 3MM, 6MM, 9MM, 12MM, 15MM, 18MM



FORMSEAL PLYWOOD

1220X2440MM

AVAILABLE IN SIZES
15MM, 18MM



STANDARD HARDBOARD

1220X2440MM

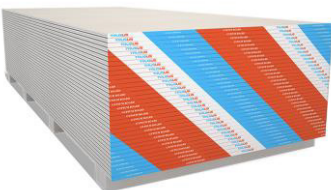
AVAILABLE IN 3MM, 4.5MM, 5MM, 6MM



FIBRE CEMENT BOARD

1220X2440MM

AVAILABLE IN SIZES:
4.5MM, 6MM, 8MM, 12MM, 18MM, 22MM



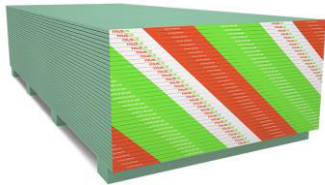
Standard Gypsum Board

STANDARD GYPSUM BOARD

1220X2440MM

AVAILABLE IN SIZES 9MM, 12MM

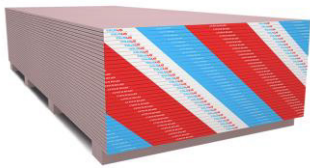
BOARD PRODUCTS



Waterproof Gypsum Board

WATERPROOF GYPSUM BOARD 1220X2440MM

AVAILABLE IN SIZES 9MM, 12MM



Fireproof Gypsum Board

FIREPROOF GYPSUM BOARD 1220X2440MM

AVAILABLE IN 9MM, 12MM



GYPSUM JOINT PAPER TAPE 50MM X 75 M



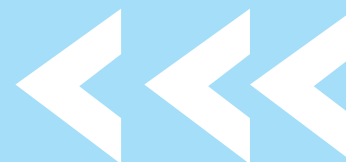
GYPSUM JOINT METAL TAPE 50MM X 90 M



GYPSUM JOINT MESH TAPE 50MM X 30 M

GYPSUM JOINT COMPOUND 25KG/PAIL

PVC GUTTERS AND ACCESSORIES



RAINWATER GUTTER AND FITTING 170MM

RAIN HEAD TEE 170MM
GUTTER JOINER / COUPLING 170MM
GUTTER ANGLE CONECTOR RIGHT 170MM
GUTTER ANGLE CONECTOR LEFT 170MM



GUTTER END CAP RIGHT 170MM
GUTTER END CAP LEFT 170MM
GUTTER BRACKET/CLAMP 170MM
RAIN WATER GUTTER 170MM X 4M



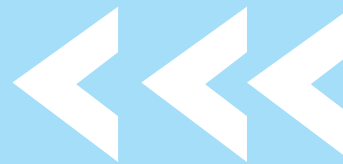
DWV ELBOW 100MM 45 DEGREE
DWV ELBOW 100MM 90 DEGREE
PVC COUPLING 100MM
DOWNPIPE 100MM X 3M TO SUIT 170MM RAIN GUTTER



RAIN HEAD TEE 140MM
GUTTER JOINER / COUPLING 140MM
GUTTER ANGLE CONECTOR RIGHT 140MM
GUTTER ANGLE CONECTOR LEFT 140MM
GUTTER END CAP RIGHT 140MM
GUTTER END CAP LEFT 140MM



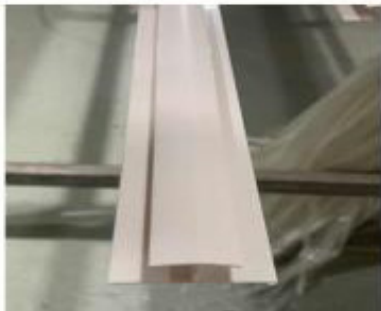
GUTTER BRACKET/CLAMP 140MM
RAIN WATER GUTTER 140MM X 4M 240
DWV ELBOW 100MM 45 DEGREE 63
DWV ELBOW 100MM 90 DEGREE 72
PVC COUPLING 100MM 120
DOWNPIPE 75MM X 3M TO SUIT 170MM RAIN GUTTER
DOWNPIPE BRACKETS



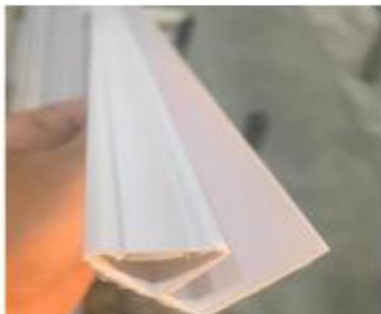
PVC CEILING



PVC CEILING
200mm*9mm*5800mm
White Glossy
40%PVC,3kg/sqm



PVC CEILING CORNER H TRIM
5800mm



PVC CEILING WALL TRIM
5800mm

ELECTRICAL



LED TUBE 2FT DAYLIGHT

2ft LED Tube: Lumens: 800Lm, Wattage: 9W,
Workable Within: 170-240V, Colour Temp: 6500K

LED TUBE 4FT DAYLIGHT

4ft LED Tube:
Lumens: 1650Lm, Wattage: 18W,
Workable Within: 170-240V, Colour Temp: 6500K



LED DOWN LIGHT - 10W - WHITE

- Dimmable With Selector Switch
(3 Mode: Cool/Daylight/Warm)
- Product Dimensions: 115 x 60mm
- Colour Temperature: 2700 - 6500K
- Beam Angle: 120° • Cut-Out: 90mm
- AS/NZ Complied Driver



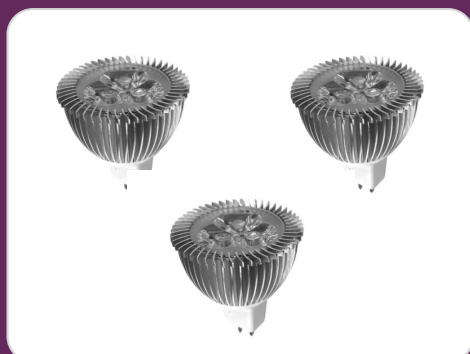
LED DOWN LIGHT - 10W - STAINLESS STEEL LED DOWN LIGHT - 10W - WHITE

Product Dimensions: 85 x 38mm - Beam Angle: 120°
- Colour Temperature: 6500K - Cut-Out: 70mm
- AS/NZ Complied Driver - Dimmable



LED DOWN LIGHT - 15W - WHITE

- Product Dimensions: 100 x 75mm
- Colour Temperature: 6500K
- All LED Drivers are AUS/NZ Complied
- Beam Angle: 25°, 28°, 60°
- Cut-Out: 70mm
- Dimmable



LED GU10 4W 240V

Equivalent to GU 10 50W 240V

LED MR16 3W 12V

Equivalent to MR16 20W 12V

MR16 4W 12V

Equivalent to MR16 50W 12V

consume up to 80% less power compared to incandescent globes.

ELECTRICAL

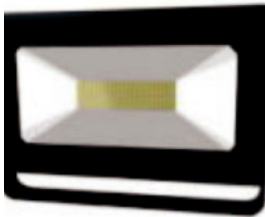


LED PAR38 LAMP 15W 240V 6400K

consume up to 80% less power compared to incandescent globes.

LED FLOOD LIGHT 50W

- No UV or IR radiation
- High Brightness SMD LED
- Long life-span, low temperature rising
- 120° Beaming Angle



LED FLOOD LIGHT 150W

- No UV or IR radiation
- High Brightness SMD LED
- Long life-span, low temperature rising
- 120° Beaming Angle



PALACE LAMP #EXD 11822 - BLACK

PALACE LAMP #EXD 11850 - BLACK

PALACE LAMP #EXD 11851 - BLACK

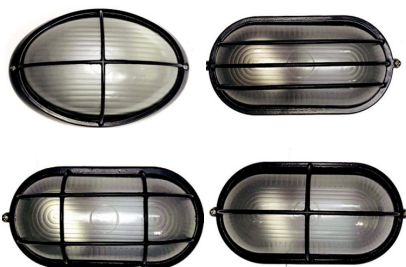
PALACE LAMP #EXD 11851 - WHITE

- Max 60W
- Aluminum & Glass
- Made for the outdoors
- 220-240V, 50Hz
- E27



LED DECO 100 LIGHT MULTICOLOUR

LED DECO 200 LIGHT MULTICOLOUR



LED BULKHEAD EXD 01 - BLACK

LED BULKHEAD EXD 03 - BLACK

LED BULKHEAD EXD 04 - BLACK

LED BULKHEAD EXD 05 - BLACK

- 9W, - Weather proof
- Value range
- 220 - 240V

ELECTRICAL



BULKHEAD EXDG 001 - BLACK
BULKHEAD EXDG 002 - BLACK
BULKHEAD EXDG 003 - BLACK

- Max 60W
- Weather proof
- Value range
- 220 - 240V



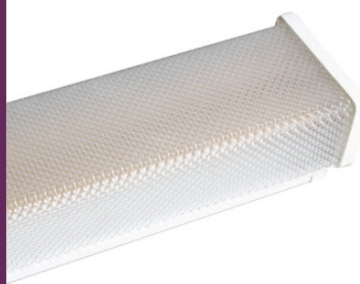
BULKHEAD EXDG 004 - BLACK
BULKHEAD EXDG 005 - BLACK
BULKHEAD EXDG 006 - BLACK

- Max 60W
- Weather proof
- Value range
- 220 - 240V



SINGLE/DOUBLE BARE BATTEN

- Suitable for residential & commercial use
- 0.5mm steel shoot housing
- Push in connectors
- Poly Carbonate lamp holder
- 220 - 240V



SINGLE/DOUBLE DIFFUSER

- Suitable for residential & commercial use
- 0.5mm steel shoot housing
- Push in connectors
- Poly Carbonate lamp holder
- Prismatic diffuser material
- 220 - 240V



WEATHERPROOF LIGHT FITTING

- 0.5mm steel shoot housing
- Push in connectors
- Poly Carbonate lamp holder, housing and diffuser material
- IP65 (Weather proof / sheltered use only)
- 220 - 240V

ELECTRICAL



FLUORESCENT TUBE - 2FT DAYLIGHT FLUORESCENT TUBE - 4FT DAYLIGHT

- Halo Phosphor - 6500K - 960lm
- Up to 8,000 hours life

TUBELIGHT STARTERS - 4-65W

- EXD Electrical Accessories
- Premium quality 2-pin ignitors for starting fluorescent lights on conventional electromagnetic circuits



BATTEN HOLDER - B22

- EXD Electrical Accessories - Lamp Holder / Batten Holder
- Bayonet Fitting - 220 - 240V

FESTOON HOLDER - B22

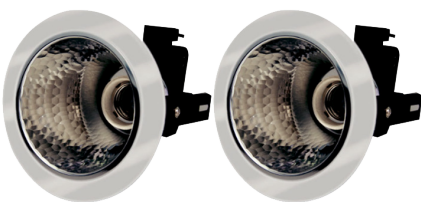
- Bayonet B22 lampholder for festoon wiring
- Simple installation to existing strings
- Suitable for 2 core x 0.75 to 1.5mm sq cables
- Weather proof - 220 - 240V



PIN CLIPS - 100 PACK

Attaches electrical cable to timber framing, walls and other substrates.

- NO.1 38mm
- NO.2 45mm
- NO.3 50mm
- NO.4 57mm
- NO.5 64mm
- NO.6 76mm



DOWNLIGHT - E27 S/CHROME - 100MM DOWNLIGHT - E27 WHITE - 100MM

- Cut-out: 100mm
- Value range
- 220 - 240V



CEILING FAN - 48" CEILING FAN - 56"

- Elegant ceiling fan with 3 blades
- 3 speed control
- Easy Installation
- Value range

ELECTRICAL



CEILING ORBIT FAN - 16"

- High RPM
- 3 Speed Control - 3 PP Blades
- Wide and Strong Air Flow

DESK FAN - 16"

- High RPM
- 3 Speed Control
- 3 PP Blades



| | H type terminal | SIZE | CABLE SIZE |
|-----|-----------------|-----------|------------|
| 3A | 0.14 | 90*16*12 | 4 |
| 6A | 0.14 | 110*17*14 | 4 |
| 10A | 0.15 | 110*17*14 | 10 |
| 16A | 0.21 | 125*20*16 | 12 |
| 20A | 0.23 | 137*19*18 | 14 |
| 30A | 0.36 | 165*23*19 | 16 |
| 60A | 0.64 | 177*26*22 | 25 |
| 80A | 0.93 | 189*30*25 | 35 |



STAND FAN - 16"

- 3 Speed Control - 3 PP Blades
- Wide and Strong Air Flow - Comes with Remote
- 90° Oscillation

WALL FAN - 16"

- Wall mounted - High RPM - 3 Speed Control
- 3 PP Blades - Wide and Strong Air Flow
- Comes with Remote - 90° Oscillation



INDUSTRIAL STAND FAN

INDUSTRIAL WALL FAN

- Large air volume and low noise
- 3 speed powerful motor
- Oscillation and tilt adjustable head
- Excellent for worksites, garages, retails, sheds and more



ISOLATOR SWITCH - 1 POLE

- Rail Mount (MCB style) - Single phase 240V
- Suitable for residential and commercial applications

RCD BREAKER 2 POLE 16AMP

- Rail Mount (MCB style)
- Single phase 240V
- Suitable for residential and commercial applications

ELECTRICAL



COPPER BUS BAR - DOUBLE SIDE- HIGH RPM

- High Quality Copper
- Available in various sizes
3 Hole - 4 Hole - 6 Hole - 8 Hole - 9 Hole
12 Hole - 15 Hole - 18 Hole - 24 Hole - 36 Hole



CIRCUIT BREAKER - 1 POLE

- Rail mount
- Single Phase 240V
- Suitable for residential and commercial applications

CIRCUIT BREAKER - 3 POLE

- Rail mount
- 3 Phase 415V
- Suitable for commercial applications



DISTRIBUTION BOX - SURFACE MOUNT

- IP40 (Indoor only)
- Comes with Din Rail & Busbar
- Suitable for residential and commercial applications

DISTRIBUTION BOX - FLUSH MOUNT

- IP 40 (Indoor only)
- Comes with Din Rail & Busbar
- Suitable for residential and commercial applications



DIN RAIL STRIP - 1M

- Rugged steel construction ensures durability
- Corrosion resistant - Used to mount equipment that utilizes 35mm DIN Rail mounting to a panel, wall, or enclosure
- 1m in length

DOUBLE PAR 38 HOLDER GPL005

- Adjustable lamp holder - E27
- Bulb seal included - IP44 rated



PAR 38 SENSOR LIGHT FITTING - BLACK

- Adjustable lamp holder - E27
- Bulb seal included - IP44 rated

ORANGE LEAD LIGHT

- 5m cable - Integrated power switch
- E27 - Max 60W - 220 - 240V / AC 50Hz
- Bulb not included - Pivoting suspension hook

ELECTRICAL



LIGHT SWITCH - 1 GANG EXD01 10A
LIGHT SWITCH - 2 GANG EXD02 10A

- 10amp
- 220 - 240V
- Interchangeable clip cover
- Vertical & Horizontal installation
- Complete with fasteners



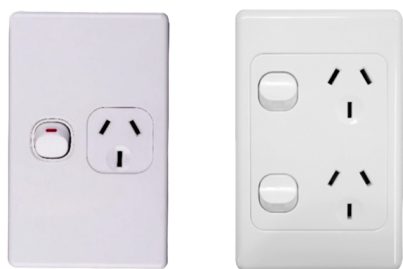
LIGHT SWITCH - 3 GANG EXD03 10A
LIGHT SWITCH - 4 GANG EXD04 10A

- 10amp
- 220 - 240V
- Interchangeable clip cover
- Vertical & Horizontal installation
- Complete with fasteners



SINGLE POWER POINT HORIZONTAL - EXD01 10A
DOUBLE POWER POINT HORIZONTAL - EXD02 10A

- 10amp
- 220 - 240V
- Interchangeable clip cover
- Complete with fasteners



SINGLE POWER POINT VERTICAL - 10A
SINGLE POWER POINT VERTICAL - 15A
DOUBLE POWER POINT VERTICAL - 10A

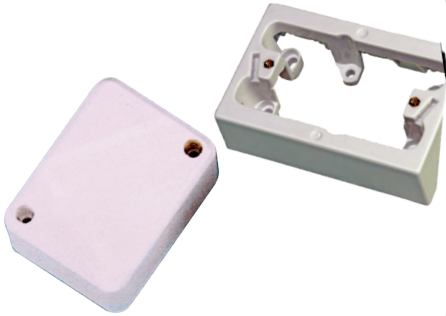
- 10amp
- 220 - 240V
- Interchangeable clip cover
- Complete with fasteners



SINGLE POWER POINT WITH LIGHT SWITCH - E02 10A
DOUBLE POWER POINT WITH LIGHT SWITCH - E03 10A

- 10amp
- 220 - 240V
- Interchangeable clip cover
- Complete with fasteners

ELECTRICAL

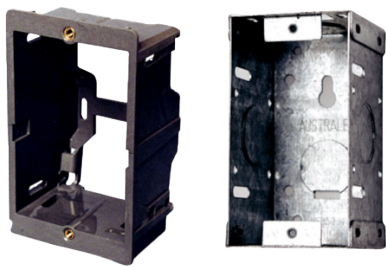


MOUNTING BOX

- 32mm - Complete with fasteners
- Surface mount

JUNCTION BOX - WHITE

- 40amp rated connectors suits up to 6mm cable
- 3 x single screw insulated connector
- 1 x double screw insulated connector
- Polycarbonate lid has convenient cut out for cable or conduit

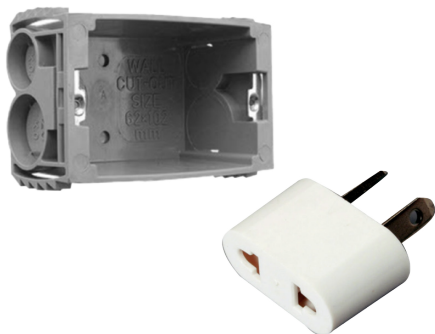


WALL BOX - PLASTIC

- Flush mount - Brass thread - 48mm deep
- Large cable openings for easier wiring
- Horizontal & vertical mount

WALL BOX DEEP - METAL

- Flush mount
- Galvanised steel
- Horizontal & vertical mount



WALL BOX DEEP - PLASTIC

- Flush mount - Suitable for concrete wall
- Large cable openings for easier wiring
- Horizontal & vertical mount

SHAVER ADAPTERS - 2 PIN

- 6A - 240V
- Suitable for small household appliances and other product



SINGLE SCREW CONNECTOR 100 PCS

- Single screw - 6mm hole
- 40A heavy duty connection
- Clear moulding

DOUBLE SCREW CONNECTOR 50 PCS

- Double screw
- 6mm hole
- 40A heavy duty connection
- Clear moulding



MAIN ENTRY BOX - SINGLE PHASE

- Single phase connector box - 240V
- IP23 - 2 connections

MAIN ENTRY BOX - 3 PHASE

- Three phase connector box
- 415V
- IP23
- 4 connections

ELECTRICAL



TPS CABLE - 100M COIL

-- Core colour: Red, Black, Green/Yellow - 220 - 240V
1.0mm 2 Core • 1.5mm 2 Core
1.0mm 3 Core • 4.0mm 2 Core
1.5mm 3 Core • 6.0mm 3 Core
2.5mm 3 Core



ISOLATOR SWITCH

AMP 1P 16A UKF1-16 8 1P 20A UKF1020
1P 32A UKF1-35 • 3P 32A UKF3-35

WEATHERPROOF SINGLE SWITCH - 10A

WEATHERPROOF DOUBLE SWITCH - 10A

- Weather proof
- IP66
- Heavy duty industrial grade



WEATHERPROOF SINGLE POWERPOINT - 10A

WEATHERPROOF DOUBLE POWERPOINT - 10A

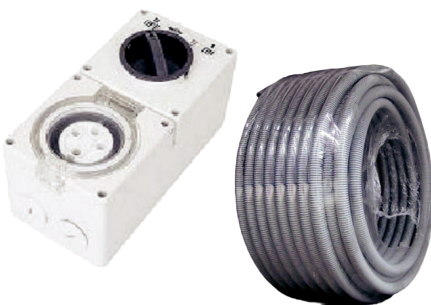
- Weather proof
- IP66
- Heavy duty industrial grade



INDUSTRIAL 4 PIN PLUG - ANGLE - M66

INDUSTRIAL 4 PIN PLUG - M66

- Weather proof
- Heavy duty industrial grade - Three phase - 500V
Amp
16A PA416
20A PA420
32A PA432



INDUSTRIAL COMB SOCKET - 4 PIN

- Weather proof - IP66 - Heavy duty industrial grade
- Three phase - 500V

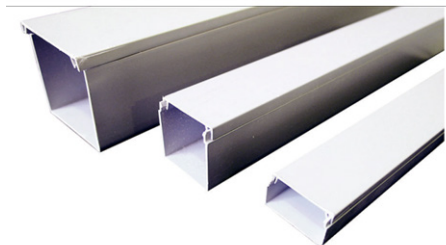
Amp: 16A M66CV416 • 20A M66CV420 • 32A M66CV432

CORRUGATED CONDUIT

- PVC corrugated conduit
- Medium duty U.V Resistance

Size: 20mm x 20m • 25mm x 20m • 32mm x 20m

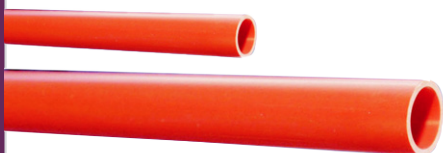
ELECTRICAL



PVC DUCT

- Medium duty - Internal wiring protection of wire

| Size | Pieces |
|-------------------|------------|
| 16mm x 16mm x 4m | 25 Lengths |
| 25mm x 16mm x 4m | 25 Lengths |
| 25mm x 25mm x 4m | 15 Lengths |
| 40mm x 25mm x 4m | 12 Lengths |
| 50mm x 50mm x 4m | 6 Lengths |
| 100mm x 75mm x 4m | 2 Lengths |



ORANGE CONDUIT

- Made from UPVC - Medium duty
- This medium duty rigid conduit is conventionally used for underground installation

| Size | Pieces |
|-----------|------------|
| 20mm x 4m | 25 Lengths |
| 25mm x 4m | 25 Lengths |
| 32mm x 4m | 10 Lengths |
| 40mm x 4m | 10 Lengths |
| 50mm x 4m | 10 Lengths |



GALVANISED SADDLE CLIP - 32MM

GALVANISED SADDLE CLIP - 32MM

GALVANISED SADDLE CLIP - 32MM

- Type: Full saddle - Material: Galvanised steel



3 PIN MALE PLUG - 10A 240V

3 PIN MALE PLUG - 15A 240V

- Flat 3 pin - 10mm entry hole
- Flexible PVC cover with cable locking nut

3 PIN FEMALE SOCKET - 10A 240V

3 PIN FEMALE SOCKET - 15A 240V

- 10mm entry hole
- Flexible PVC cover with cable locking nut



3 PIN DOUBLE ADAPTOR

- Angled double adaptor - Space saving design
- 240V - 10amp

4 WAY POWERBOARD WITH SURGE PROTECTOR

4 WAY POWERBOARD WITH OVERLOAD B/P

- Overload protection safety
- Simple push reset
- 240V - 10amp

ELECTRICAL



6 WAY POWERBOARD WITH SURGE PROTECTOR 6 WAY POWERBOARD WITH OVERLOAD B/P

- Overload protection safety
- Simple push reset
- 240V - 10amp

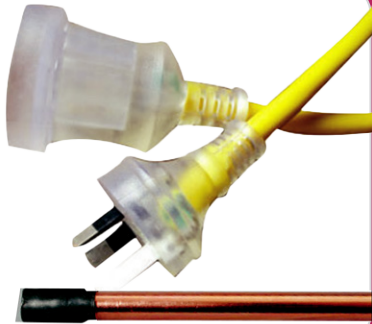


EXTENSION CORD - WHITE - 1MM

Provides power for devices with cables that can't reach any nearby electrical outlets.

Available in multiple different lengths.

- Colour: White - 240V - 10amp
- 3 core 1mm cable - Suitable for domestic use



H/D EXTENSION CORD - YELLOW - 1.5MM

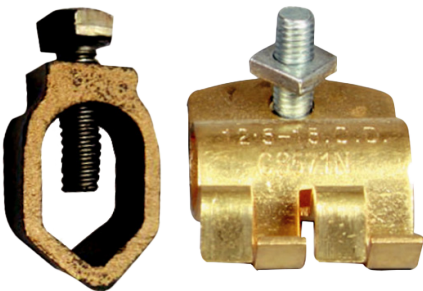
Provides power for devices with cables that can't reach any nearby electrical outlets.

Available in multiple different lengths.

- Colour: Yellow - 240V - 10amp - 3 core 1mm cable - Suitable for domestic & Industrial use
- Size: 10m • 20m • 30m

COPPER COATED EARTH ROD - 1.2M - 16MM

The most cost-effective means of achieving a low-resistance path to earth. • Copper plated steel rod.

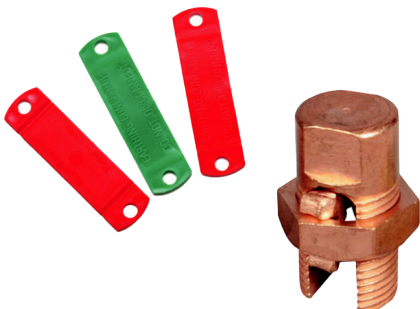


EARTH ROD CLAMP 5/8" (16MM)

Used for joining earth rods to different sizes of stranded copper conductor. Clamps are highly resistant to corrosion and mechanically strong offering a long life span.

EARTH ROD CLIP 5/8" (16MM)

Connects the lead out cable from the energiser to an earth rod. The earth clip guarantees a secure connection between the energiser and earthing system for optimum electrical conductivity.



EARTH LABELS (RED/GREEN)

Green & Red plastic industry recognised "earth tag" to identify the cable it is connected to is an earth and must remain connected.

LINE TAP

- Ideal to use as connection clamp
- Firmly hold cables and provide maximum conductivity
- light & Heavy duty application
- Size: 16mm, 25mm, 35mm



AURA & WHIRL WIND CEILING FANS



Double-ball bearing



230 CMM / 380 rpm



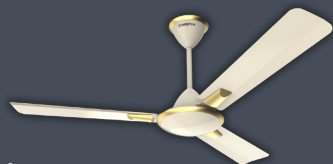
Anti-Rust Aluminium
& Copper Build



Sweep diameter (mm)
900 / 1200 / 1400 MM

Supplied by

**EXPORT
DEPOT**



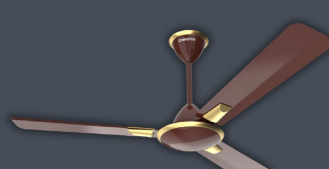
Aura



Aura



Whirl Wind



Aura



HVAC&R PRODUCTS



CS/CU-Z20XKR

Panasonic Highwall Aero Series R32 2.05kW -
Wireless &WIFI incl

CS/CU-Z25XKR-1

Panasonic Highwall Aero Series R32 2.5kW-
Wireless &WIFI incl



CS/CU-Z35XKR

Panasonic Highwall Aero Series R32 3.5kW -
Wireless &WIFI incl

CS/CU-Z42XKR

Panasonic Highwall Aero Series R32 4.2kW
Wireless &WIFI incl



CS/CU-Z50XKR

Panasonic Highwall Aero Series R32 5.0kW-
Wireless &WIFI incl

CS/CU-Z50XKR-1

Panasonic Highwall Aero Series R32 5.0kW
Wireless &WIFI incl

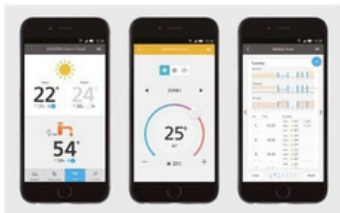


CS/CU-Z60XKR-1

Panasonic Highwall Aero Series R32 6.0kW-
Wireless &WIFI incl

CS/CU-Z71XKR

Panasonic Highwall Aero Series R32 7.10kW
Wireless &WIFI incl



CS/CU-Z80XKR

Panasonic Highwall Aero Series R32 8.0kW
Wireless &WIFI incl

HVAC&R PRODUCTS



RINNAI HEATPUMPS - PRO SERIES

Panasonic Highwall Aero Series R32 2.05kW -
Wireless & WIFI incl

| | | | |
|----|----|----|---|
| 26 | 25 | 27 | |
| 35 | 35 | 4 | |
| 50 | 50 | 0 | |
| 60 | 6 | 5 | 6 |
| 70 | 0 | 2 | 2 |
| 80 | 7 | 7 | |
| | 80 | 85 | |
| | 0 | 5 | |



HEAT PUMP ACCESSORIES

3PS5-001K ACTRON AIR SOFT STARTER



HEAT PUMP ACCESSORIES

AHKFC HANGING KIT SUIT
ACTRONAIR FAN COIL UNIT

HVAC&R PRODUCTS



RINNAI HEATPUMPS - PRO SERIES

Panasonic Highwall Aero Series R32 2.05kW - Wireless & WIFI incl

| | | | | |
|----|----|----|---|---|
| 26 | 25 | 27 | | |
| 35 | 35 | 4 | | |
| 50 | 50 | 0 | | |
| 60 | 6 | 5 | 6 | |
| 70 | 0 | 2 | 2 | |
| 80 | 7 | 7 | | |
| | 80 | 85 | 0 | 5 |



HEAT PUMP ACCESSORIES

3PS5-001K ACTRON AIR SOFT STARTER

AHKFC HANGING KIT SUIT
ACTRONAIR FAN COIL UNIT



CHEMICALS

R-CDD/1

COIL AND DUCT DISINFECTANT EPA REGISTERD HOSPITAL
GRADE 1.0 C/W SPRAYER

R-CDD/5

COIL AND DUCT DISINFECTANT EPA REGISTERD HOSPITAL
GRADE 5L



R-FCD/1

FILTER CLEANER DEGREASER, BIODEGRADABLE FILTER
CLEANER 1.0L C/W SPRAYER

R-FCD/5

FILTER CLEANER DEGREASER, BIODEGRADABLE FILTER
CLEANER 5L



4182-2

CAL BLUE PLUS MICRO LEAK DETECTOR 0.95L C/W SPRAYER

HVAC&R PRODUCTS



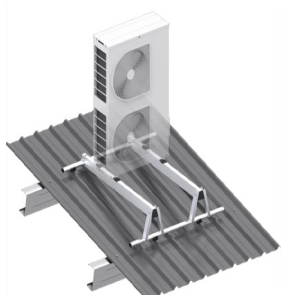
AC - BRACKETS

HL-450

WALL BRACKET FOR A/C UNIT & CONDENSER. MAX WEIGHT 100KG. 780X450X375. GAV+POWDER COATED.

HL-550

WALL BRACKET FOR A/C UNIT & CONDENSER. MAX WEIGHT 150KG. 780X552X375. GAV+POWDER COATED.

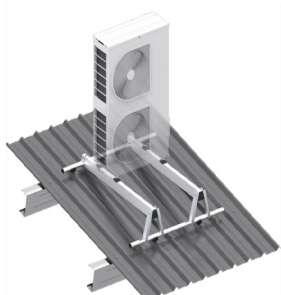


LIGHT WEIGHT SINGLE MOUNT

CS001.12.3 300MM ADJUSTABLE SUPPORT - 1200MM PURLINS
0-80KGS

CS00L.15.6 600MM ADJUSTABLE SUPPORT - 1500MM PURLINS
0-80KGS

CS00L.18.6 600MM ADJUSTABLE SUPPORT - 1800MM PURLINS
0-80KGS



HEAVY DUTY SINGLE MOUNT

CS001H.12.3 300MM HD ADJUSTABLE MOUNT - 1200MM PURLINS
80-150KGS

CS001H.15.6 600MM HD ADJUSTABLE MOUNT - 1500MM PURLINS
80-150KGS

CS0001H.18.6 600MM HD ADJUSTABLE MOUNT - 1800MM PURLINS
80-150KGS



PAIR COILS

| | | | |
|-------|-------------|--------------|-----------|
| AP-23 | 1/4" X 3/8" | 6.35 X 9.53 | 0.8 X 0.8 |
| AP-24 | 1/4" X 1/2" | 6.35 X 12.70 | 0.8 X 0.8 |
| AP-25 | 1/4" X 5/8" | 6.35 X 15.88 | 0.8 X 1.0 |
| AP-35 | 3/8" X 5/8" | 9.53 X 15.88 | 0.8 X 1.0 |
| AP-36 | 3/8" X 3/4" | 9.53 X 19.05 | 0.8 X 1.2 |



FAN MOTORS

R09R-3028A-41M-3S

300MM 1370RMP 80W 3.5KG

RLLR-3S30A-41M-38

350MM 1400RMP 145W 6.0KG

HVAC&R PRODUCTS



R134A-13.6 - 13.6KG

R134A IS A COMMON REFRIGERANT USED IN A WIDE RANGE OF REFRIGERATION AND MOBILE AIR CONDITIONING APPLICATIONS, INCLUDING MEDIUM AND HIGH TEMPERATURE REFRIGERATION

R410A-11.3 - 11.3KG

USED IN DOMESTIC AND LIGHT AIR CONDITIONING EQUIPMENTS



R407C-11.3 - 11.3KG

SUITABLE FOR RESIDENTIAL & LIGHT AIR CONDITIONING AND DIRECT EXPANSION AIR CONDITIONING SYSTEMS

R404A-10.9 - 10.9KG

WIDELY USED IN LOW TO MEDIUM TEMPERATURE REFRIGERATION APPLICATIONS



R507-11.3 - 11.3KG

REFRIGERANT GAS WIDELY USED IN LOW AND MEDIUM TEMPERATURE REFRIGERATION APPLICATIONS

R407F-11.3- 11.3KG

BLEND OF HFC THAT IS SUITABLE FOR USE IN LOW AND MEDIUM TEMPERATURE APPLICATIONS SUCH AS COMMERCIAL REFRIGERATION.



R449A-11.35- 11.35KG

NEXT-GENERATION HFO-BASED REFRIGERANT THAT COMBINES EXCELLENT COOLING PERFORMANCE WITH IMPROVED ENERGY EFFICIENCY AND ENVIRONMENTAL PROPERTIES.

R32-3.0- 3.0KG

ENVIRONMENTALLY FRIENDLY ALTERNATIVE TO USE WITHIN AIR CONDITIONING AND HEAT PUMP SYSTEMS.



R600A-3.0- 3.0KG

COMMONLY USED IN DOMESTIC REFRIGERATION APPLIANCES

ADAPTER VALVE

ADAPTER VALVES FOR R600A GAS

HVAC&R PRODUCTS



WELDING AND BRAZING EQUIPMENT

MAPP

DISPOSABLE "M APP" GAS (PROPYLENE) (400GM)

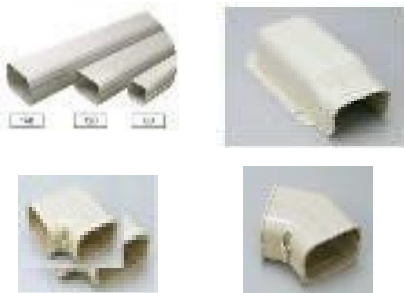
OXY

DISPOSABLE "OXYGEN" CYLINDER TO SUIT BROMIC BRAZING KIT (B6GM)



PLS-LKG

15% SILVER 2.4MM DIA MX750MM LONG, BROWN TIP (1.0KG)



TOYO DUCTING - 80MM

- | | |
|---------------|---------------------|
| TD-80 | DUCTING 2M LENGTHS |
| DC-80 | DUCTING CAP |
| DL-80 | DUCTING 90DEG ELBOW |
| DLW-80 | DUCTING 45DEG ELBOW |



- | | |
|---------------|------------------------|
| DK-80 | DUCTING CORNER |
| DJ-80 | DUCTING JOINT |
| DT-80 | DUCTING T - JOINT |
| DF-80S | DUCTING FLEXIBLE JOINT |



- | | |
|---------------|-------------------------|
| DF-80L | DUCTING FLEX JOINT LONG |
| DE-80 | DUCTING END SOCKET |
| DS-80 | DUCTING CEILING CAP |

HVAC&R PRODUCTS



TOYO DUCTING – 120MM

| | |
|---------------|---------------------|
| TD-120 | DUCTING 2M LENGTHS |
| DC-120 | DUCTING CAP |
| DL-120 | DUCTING 90DEG ELBOW |



| | |
|---------------|----------------------|
| DK-120 | DUCTING CORNER |
| DJ-120 | DUCTING JOINT |
| DT-120 | DUCTING T - JOINT |
| DB-120 | DUCTING BRANCH JOINT |



| | |
|---------------|------------------------|
| DF-120 | DUCTING FLEXIBLE JOINT |
| DR-120 | DUCTING REDUCING JOINT |
| DS-120 | DUCTING CEILING CAP |



TOYO DUCTING – 14MM

| | |
|---------------|------------------------------|
| URH-14 | DRAINPIPE, DOUBLE LAYER 14MM |
|---------------|------------------------------|



BASE MOUNTINGS

| | |
|--------------|---|
| FSP2 | PVC FLOOR SUPPORT (450MM) WITH STAINLESS STEEL BOLTS (EACH) |
| PS465 | POLYSLAB MED 465 X 885 X 51MM |

HVAC&R PRODUCTS



CX CLASS SERIES PANEL MOUNT • 230V AC • BLUE DISPLAY

XR20CX-B

MEDIUM TEMP CONTROLLER WITH “OFF CYCLE” DEFROST.
1 X NTC



XR30CX-B

MEDIUM TEMP CONTROLLER WITH “OFF CYCLE” DEFROST AND
ADDITIONAL CONFIGURABLE RELAY.
1 X NTC



XR40CX-B

LOW TEMP CONTROLLER WITH ELECTRIC DEFROST MANAGEMENT.
2 X NTC



XR60CX-B

LOW TEMP CONTROLLER WITH ELECTRIC DEFROST, FAN RELAY,
DIGI INPUT.
2 X NTC




XR70CX-B

LOW TEMP CONTROLLER WITH ELECTRIC DEFROST, FAN RELAY,
AUXILIARY ALARM RELAY, DIGI INPUT.
2 X NTC





Unit 4, 9 Chonny Cres, Manurewa
Auckland, New Zealand

Ph: +64 27464 1186 

sales@exportdepot.co.nz

www.exportdepot.co.nz